

A unique risk controlled strategy seeking long-term capital growth through holdings in global equity, fixed income, currency, commodity, and real estate markets.

PRODUCT FACTS

INVESTMENT OBJECTIVE

Capital Appreciation

PORTFOLIO MANAGER

Andi Kim, CFA

INCEPTION

September 2005

PLATFORM

Separately Managed Account

MINIMUM INVESTMENT

\$100,000

MANAGEMENT FEE

20% Performance Fee

HIGH WATER MARK

Yes

LEVERAGE

Reg-T (2:1) Margin Account Required[§]

[§]PDAM Global Alpha Ultra strategy may hold inverse ETFs and leveraged ETFs.

REFERENCE INDICES

No benchmark is presented because PDAM Global Alpha Ultra strategy is not managed against a benchmark. Standard & Poor's 500 TR Index, Dow Jones Credit Suisse AllHedge Global Macro Index (DJCS Global Macro), Barclay Global Macro Index (Barclay Global Macro) are used for comparison purposes.

TOP 5 HOLDINGS (as of 01/15/2012)

Inverse S&P 500 Index*	15.35%
Gold Futures*	14.23
Cash	12.63
Mastercard Incorporated Common	6.33
Inverse U.S. Treasuries*	4.35

*Positions held via Exchange Traded Funds

GIPS

Verified by Ashland Partners & Company LLP.



VERIFIED

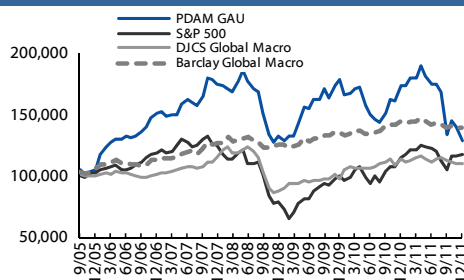
As of 7/1/2011, the firm is defined as Positive Delta Asset Management, the asset management division of Positive Delta Asset Management LLC. Prior to 7/1/2011, the firm was defined as Positive Delta Asset Management LLC, the independent registered investment adviser. The firm was redefined as the Asset Management Division of the Positive Delta Asset Management, LLC due to this division being held out as a separate business. PDAM claims compliance with the Global Investment Performance Standards (GIPS®). PDAM Global Alpha Ultra Composite was created September 2005. PDAM has been independently verified for the periods September 2005 to September 2011. PDAM Global Alpha Ultra Composite has been examined for the periods September 2005 to September 2011. Performance shown for 2005 is partial period return starting on 9/1/2005. Performance calculation is based on USD. The verification and performance examination reports as well as list of composite descriptions are available upon request made to:

Positive Delta Asset Management
3600 Wilshire Blvd., Suite 1510
Los Angeles, CA 90010
Phone: 213-388-3638
Email: info@positivedelta.com

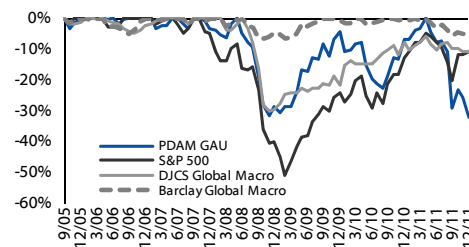
HISTORICAL NET PERFORMANCE

	PDAM Global Alpha ULTRA	DJCS Global Macro	S&P 500
2005	4.76	0.65	2.91
2006	43.89	1.28	15.80
2007	16.16	13.46	5.50
2008	-24.04	-23.95	-37.01
2009	34.03	11.35	26.45
2010	-2.68	17.20	15.05
2011	-25.91	-3.30	2.12
SINCE INCEPTION	28.53	10.74	17.65

PERFORMANCE COMPARISON



DRAWDOWNS



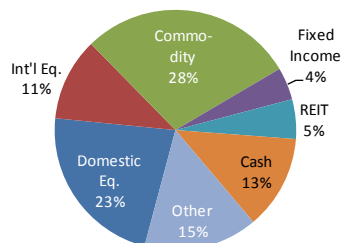
ANNUALIZED NET RETURNS AND VOLATILITY

	PDAM GAU		S&P 500		DJCS Global Macro		Barclay Global Macro	
	Return	Risk	Return	Risk	Return	Risk	Return	Risk
YTD	-25.91	25.49	2.12	15.94	-3.30	6.19	-3.45	4.04
1YR	-25.91	25.49	2.12	15.94	-3.30	6.19	-3.45	4.04
3YR	-1.13	20.47	14.10	18.97	8.07	8.11	3.47	4.86
5YR	-3.14	19.00	-0.26	18.88	1.72	11.17	4.16	5.41

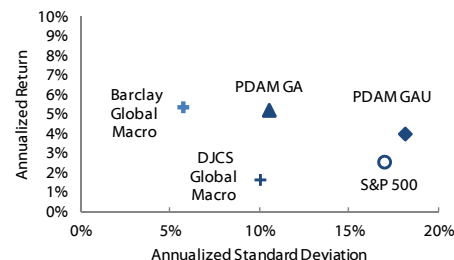
STATISTICAL PROPERTIES COMPARISON

	Annualized Return	Annualized Volatility	Sharpe Ratio	Low Return (Monthly)	High Return (Monthly)	Mean Return (Monthly)	Correlation	Alpha	Beta	R-Squared	t-Stat
PDAM GAU	4.04	18.13	0.06	-20.38	12.46	0.47	PDAM GAU Relative to Reference Indices				
S&P 500	2.60	17.02	-0.02	-16.80	10.93	0.34	0.68	2.77%	0.72	0.46	0.29
DJCS Global Macro	1.62	10.08	-0.14	-13.78	7.79	0.18	0.43	4.06%	0.78	0.19	0.54
Barclay Global Macro	5.42	5.70	0.42	-3.27	3.97	0.45	0.63	-5.19%	2.01	0.40	0.03

PORTFOLIO STRUCTURE



RETURN AND RISK PROFILE



INVESTMENT COMMITTEE

ADVISOR

Andi Kim, CFA – CIO

- Chartered Financial Analyst (CFA) (2003 – Present)
- Associate Editor, Int'l Journal of Business (2005 – Present)
- Adjunct Faculty, Dept. of Finance and Business Law, CSU Fresno (2007 – 2008)
- Co-Manager, RQSI/Access Emerging CTA Index Fund (2004 – 2005)
- Fund Manager/Proprietary Trader, LG Investment & Securities, Kookmin Bank (1996 – 2001)
- MBA in Finance, BS in ISDS, CSU Fresno (1993)
- Member, American Mensa (1995 – Present)
- Seoul National University

Donald Kim – CEO

- Principal, Gemstone (2000 - Present)
- Vice President, Far East National Bank (1999 - 2000)
- Corporate Finance Associate, Libra Investments, Inc. (1997 - 1999)
- Audit Staff, General Electric International (1995 - 1997)
- Yale School of Management (1993 - 1995)
- U.C. Berkeley, B.A. (1988)

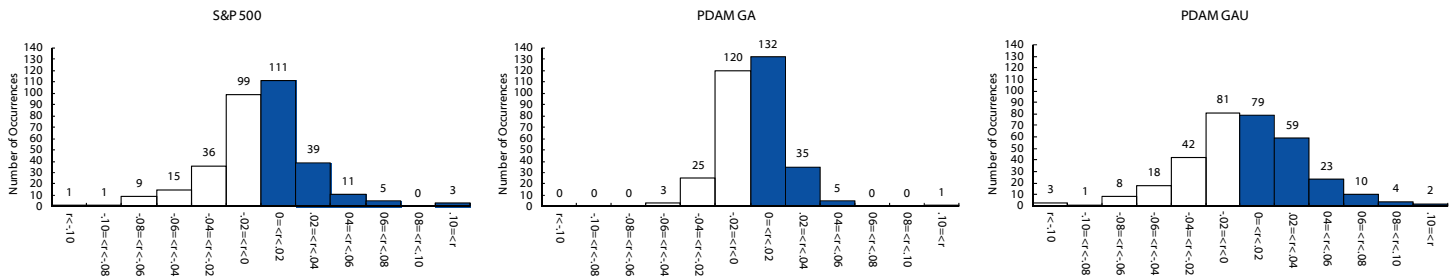
Harry Kim – CCO, General Counsel

- Partner, Lee Anav Chung LLP (2005 - Present)
- Senior Counsel, K&R Law Group (1999 - 2004)
- Associated with Mitchell, Silberberg & Knupp LLP (1996 - 1999); Bingham McCutchen LLP (1994 - 1996) and Sullivan & Cromwell (1991 - 1994)
- New York University School of Law, JD (1991)
- Harvard College, AB (1986)

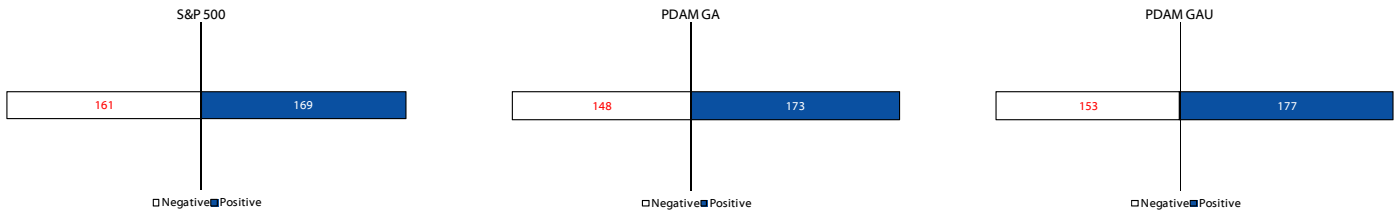
K. C. Chen, Ph.D., CFA – Advisor

- Chairman, Department of Finance and Business Law, California State University Fresno (1995 – Present)
- Theodore F. Brix Professor in Finance, California State University Fresno (1988 – Present)
- Chartered Financial Analyst (CFA) (1998 – Present)
- Editor, International Journal of Business (1996 – Present)
- MBA, Ph.D. in Finance, Ohio State University (1982)
- National Taiwan University (1976)

WEEKLY RETURN DISTRIBUTION



NUMBER OF POSITIVE & NEGATIVE WEEKS



CORRELATIONS AMONG SAA HOLDINGS

	SAA1	SAA2	SAA3	SAA4	SAA5	SAA6	SAA7	SAA8	SAA9	SAA10	SAA11	SAA12	SAA13	SAA14	S&P500	R2000	Date of Addition
SAA1	1.00																Sep-06
SAA2	0.61	1.00															May-05
SAA3	0.47	0.53	1.00														Nov-05
SAA4	0.61	0.71	0.52	1.00													Jun-06
SAA5	0.52	0.46	0.43	0.75	1.00												Nov-05
SAA6	0.20	0.46	0.05	0.20	0.03	1.00											Nov-05 ¹
SAA7	0.04	0.25	0.15	0.35	0.29	0.05	1.00										May-06
SAA8	0.51	0.68	0.67	0.80	0.71	0.07	0.27	1.00									Nov-06
SAA9	0.37	0.59	0.68	0.74	0.64	0.04	0.36	0.89	1.00								Oct-07
SAA10	0.28	0.45	0.50	0.48	0.30	0.01	0.21	0.62	0.63	1.00							Jan-08 ²
SAA11	0.13	0.37	0.16	0.28	0.47	0.01	0.19	0.45	0.40	0.26	1.00						Nov-08
SAA12	0.26	0.50	0.67	0.58	0.43	0.08	0.18	0.71	0.80	0.46	0.12	1.00					Dec-08
SAA13	0.48	0.80	0.48	0.48	0.41	0.36	0.17	0.58	0.49	0.21	0.26	0.54	1.00				Aug-09
SAA14	0.56	0.71	0.56	0.94	0.74	0.26	0.38	0.83	0.71	0.50	0.40	0.55	0.49	1.00			Aug-10
S&P500	0.49	0.68	0.77	0.77	0.63	0.05	0.37	0.88	0.93	0.69	0.31	0.84	0.58	0.76	1.00		
R2000	0.38	0.55	0.74	0.70	0.59	0.05	0.32	0.85	0.96	0.67	0.31	0.86	0.46	0.68	0.95	1.00	

1. Originally added as IAU, then replaced in Nov-08
2. Originally added as IHF, then replaced in Oct-08

DISCLOSURE STATEMENT

This information is neither investment advice nor a recommendation to enter into any investment advisory service. This document does not constitute an offer to sell or a solicitation of an offer to buy securities. This document is subject to the more complete information contained in the FINRA Form ADV Part II. Prospective clients should read these disclosures carefully before investing. This document is confidential and is intended solely for the information of the person to whom it has been delivered. There is no benchmark; however, Dow Jones Credit Suisse AllHedge Global Macro IndexSM is used as a reference index for comparison purposes. The reference index is a subset of the Dow Jones Credit Suisse AllHedge IndexSM that measures the aggregate performance of global macro funds. Currently there are seven constituent funds in the Index. It is not to be reproduced, in whole or in part, to third parties. Investors should not assume that they will experience returns comparable to past performance. It is possible that investors may lose some or all of their investment. Before making an investment decision, you should consider the suitability of an investment with respect to your investment objectives and personal situation, as well as your net worth, income, age, risk tolerance and liquidity needs. An investment in PDAM is suitable only for investors who can bear the associated risks and should be viewed as a long-term investment. GIPS® is a registered trademark of CFA Institute. CFA Institute has not involved in the preparation or review of this report.

